



## HOW TO OPERATE YOUR DICTIONARY

This brief dictionary introduction is designed to show you how to operate your Inductel dictionary now that it has been installed on your computer. Although these instructions refer to the Inductel Medical Dictionary as the example, the instructions generally apply to all Inductel dictionaries.

This guide covers the basics of how to look up definitions. For a complete outline of how to operate your Inductel dictionary, you may wish to review your online manual. It is available through the Help menu in your KAS window.

To return to this page from any other, please click on the "Home" link.

Please be advised that although this guide WILL show you how to operate your dictionary, it WILL NOT actually operate your dictionary. To do that, you will have to actually start and use your dictionary following the instructions provided in this guide.

You may wish to adjust the size of your browser window to fit the size of this page. To begin the introduction, please click on the link corresponding to the operating system on your computer:

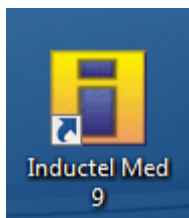
- [Microsoft Windows](#)
- [Mac OS X](#)

## HOW TO OPERATE YOUR DICTIONARY

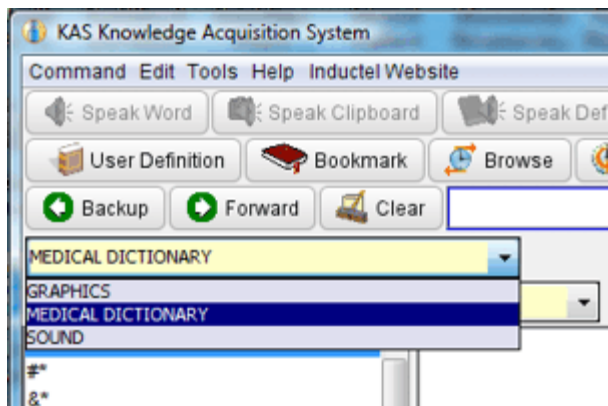
Here are a few very basic instructions on getting started with your new Inductel dictionary. For complete operating instructions, please see the online manual available through the Help menu in the KAS window.

1. To **start** your Inductel dictionary in Microsoft Windows, double on the Inductel program icon you created during the installation.

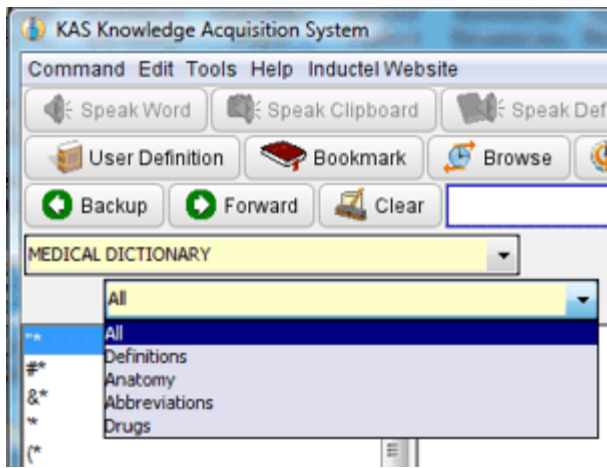
In this example we put the Inductel program icon on our Windows desktop, but we could also have located it on our Windows Start menu, or in the Quick Launch bar.



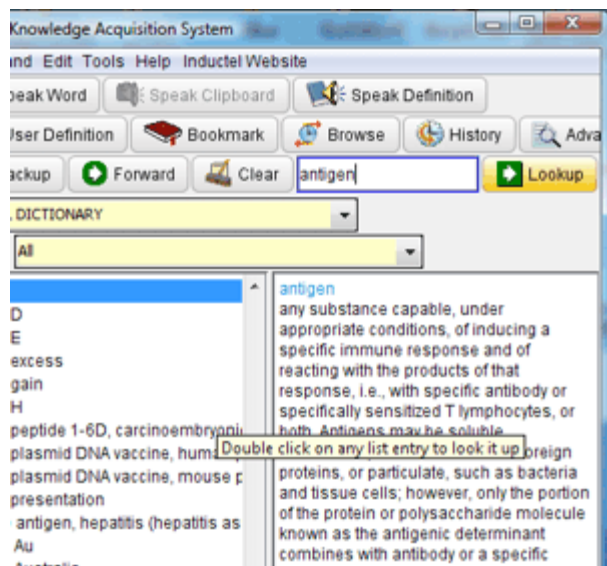
2. In the KAS window, **select** a dictionary from the dictionary menu. In this example we have selected the medical dictionary. The dictionary menu will contain at least one entry, but may contain more entries, depending on which product you have.



3. Also in the KAS window, **select** a subsection from the subsection menu if the subsection menu is present. We suggest selecting the "All" subsection to start with. (Some Inductel dictionaries have no subsections.)



4. In the text entry field, key in a word, and click on the "Lookup" button. In this example we have looked up the word "antigen."



5. For further instructions on how to operate your dictionary, please refer to the online manual found in the Help Menu in your KAS window.

THANK YOU.

[HOME](#)

## HOW TO OPERATE YOUR DICTIONARY

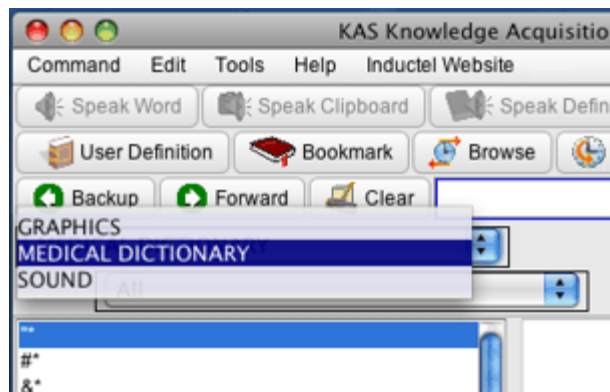
Here are a few very basic instructions on getting started with your new Inductel dictionary. For complete operating instructions, please see the online manual available through the Help menu in the KAS window.

1. To **start** your Inductel dictionary in Macintosh OS X, double on the Inductel program alias you created during the installation.

In this example we put the Inductel program alias on our Macintosh desktop, but we could also have located it in the dock.

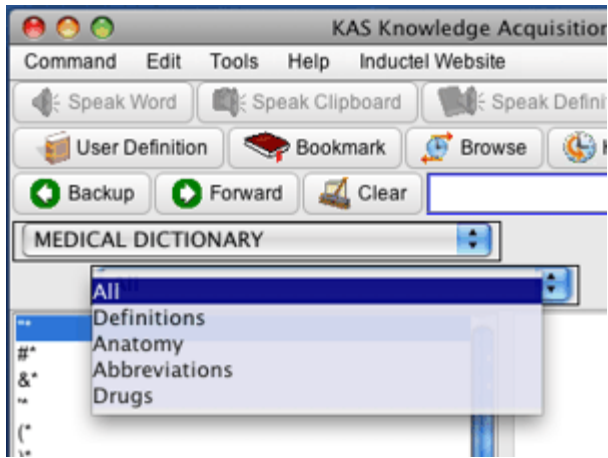


2. In the KAS window, **select** a dictionary from the dictionary menu. In this example we have selected the medical dictionary. The dictionary menu will contain at least one entry, but may contain more entries, depending on which product you have.

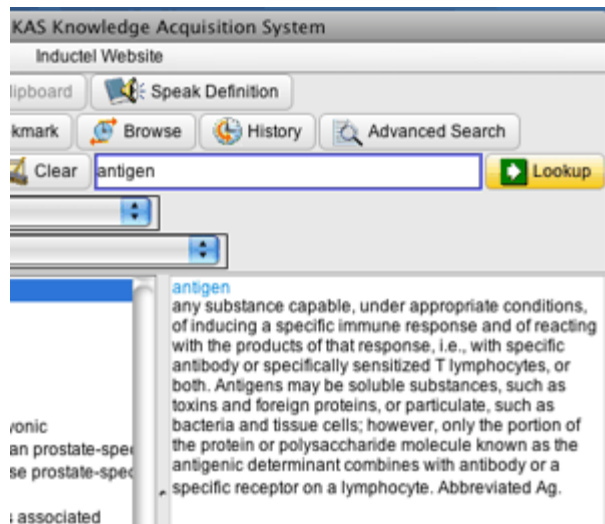


3. Also in the KAS window, **select** a subsection from the subsection menu if the subsection menu is present. We suggest selecting the "All" subsection to start with. (Some Inductel dictionaries have no subsections.)

## HOW TO OPERATE YOUR DICTIONARY



4. In the text entry field, key in a word, and click on the "Lookup" button. In this example we have looked up the word "antigen."



5. For further instructions on how to operate your dictionary, please refer to the online manual found in the Help Menu in your KAS window.

THANK YOU.

[HOME](#)