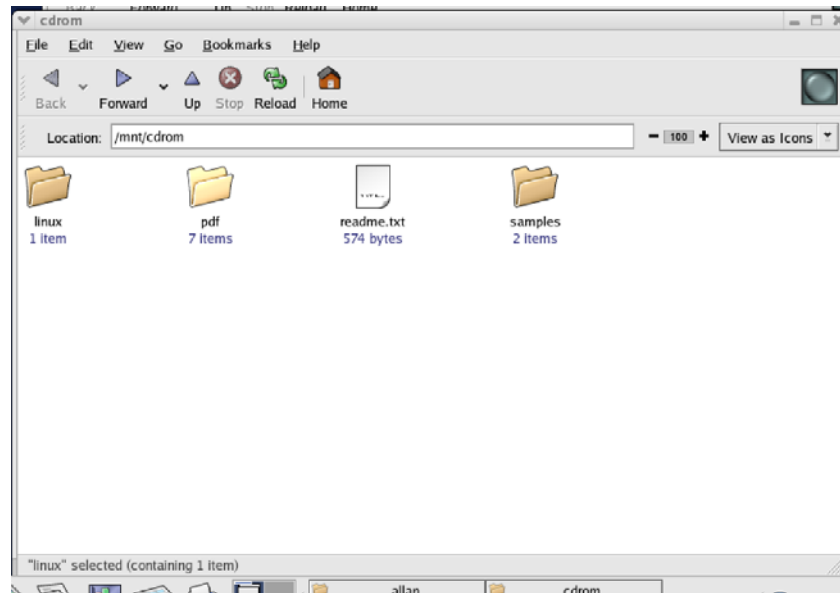


## INDUCTEL DICTIONARY CD INSTALLATION UNDER LINUX

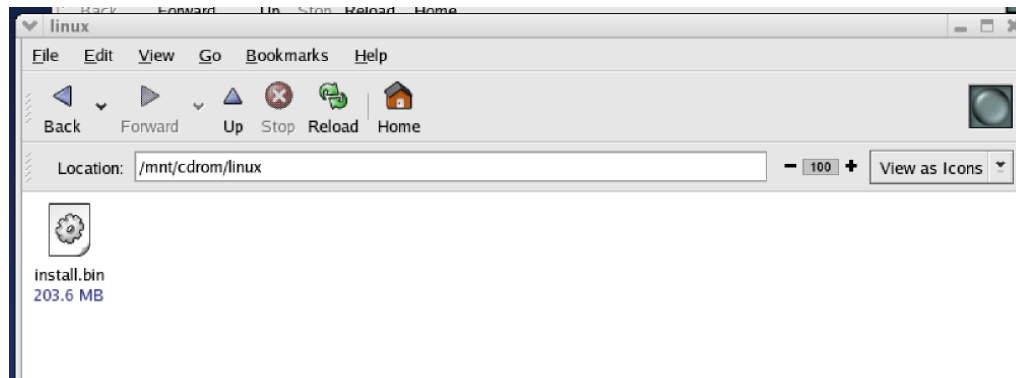
Place your Inductel CD in your CD drive. Then, double click your mouse on the **CD icon** to display the contents of your Inductel CD.



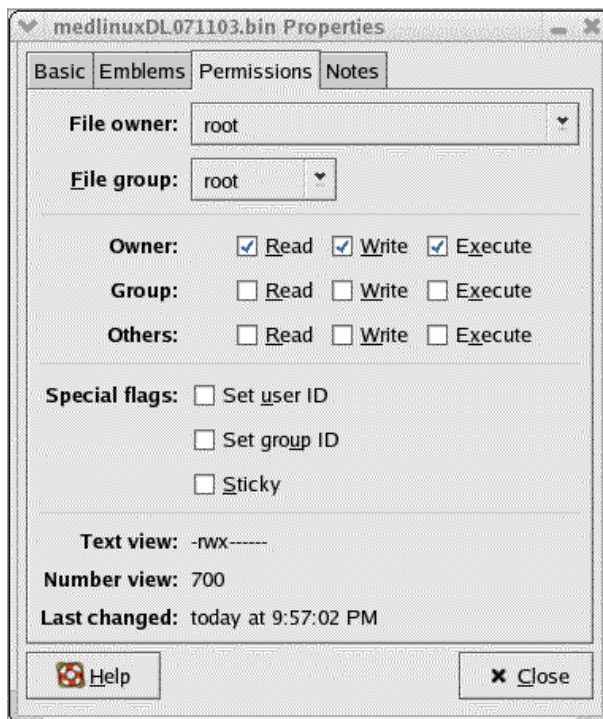
On your Inductel CD, double click on the **“linux”** folder to display its contents.



In the **“linux”** folder, right click on the **“install.bin”** file.



Your right click will generate a fly-out menu. In the fly-out menu select **“Properties.”** In "Properties", select **“Permissions.”** In "Permissions", place a check in the **“Execute”** box as shown on the next sheet.



After having set "Permissions", close the "Properties" window, and double click on the "**install.bin**" file. That action will generate a prompt window titled "Run or Display?" In "Run or Display", select "**Run.**"



Selecting "Run" will start the installation program. After the installation program finishes, start your Inductel dictionary by double clicking on the "**Inductel**" link/icon. The "Inductel" link/icon will be located in the **Link Folder** you chose during the installation. When prompted to "Run or Display?" choose "**Run.**"

